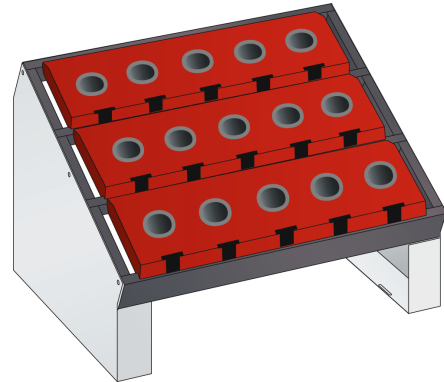


# NC STORAGE AND TRANSPORT SYSTEMS

## NC BENCH STAND

NC storage and transport systems made by LISTA give you the perfect solution for your tool logistics. Our NC modules not only provide professional storage in inserts specially optimised for your machining and cutting tools, but also a safe method of transporting them. Tools are stored in a space-saving and organised way and are always within reach and ready for use. But that's not all: our NC modules can be individually equipped and can of course be freely combined with the entire LISTA system in order to make the best possible use of the valuable space in your production facility.

**NC bench stand:** Both preconfigured models and customised configurations are available with screwed-in insert frames or screw-free suspended tool cradles. The tool cradle can be set in a horizontal or sloping position. Specification: sheet steel



NC bench stand		Art-Nr.: 15.432.020	
Net weight kg	9.5	Number of holders	15
LISTA units	36 x 27 E	Type	ISO-SK 50
Width mm	588	Specifications	With screwed in insert frame for 3 strips. Specification: steel sheet. Colour: grey, NCS S 4502-B. Side elements: as per colour chart
Depth mm	413	Partitioning schemes	F
Height mm	345	Colour	Light grey RAL 7035

### Product-specific benefits

- + Safe, clean and organised storage** in high-quality inserts made from break-proof, impact-proof and oil-resistant ABS material tailored to hold your cutting tools
- + Optimum space utilisation** because these high-capacity systems are not only space-saving, but the tools are just where you need them – right next to the machine
- + Customised and easy to assemble** using tool holders with snap fasteners for tool-free insertion and removal
- + Secure transport** thanks to robust and stable design
- + Maximum ease of use and ergonomics** since holders can be fitted at an angle and shelves and drawers can be pulled out
- + General benefits of the LISTA drawer cabinets**

